



## MEETING HANDOUT

**THURSDAY, JUNE 13, 2024**

**6:30-7:30 P.M.**

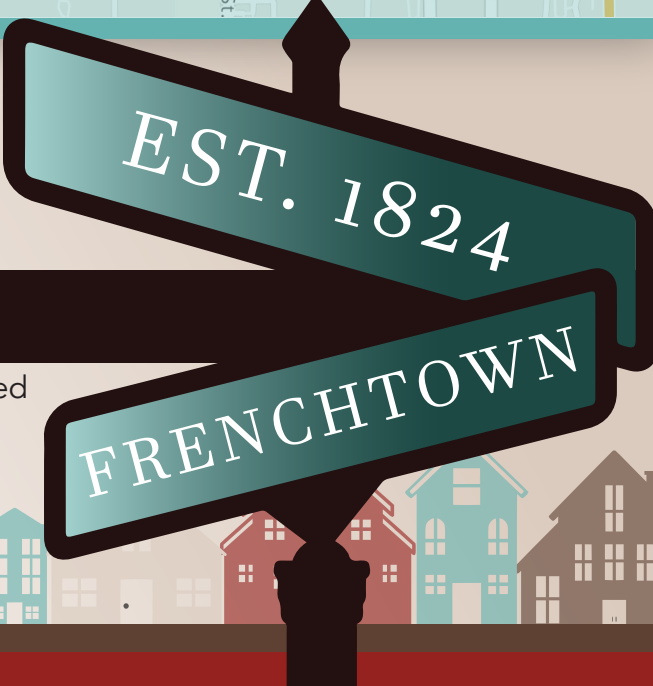
**LAWRENCE-GREGORY  
COMMUNITY CENTER  
1115 DADE STREET, TALLAHASSEE**

## PROJECT INFORMATION

The City of Tallahassee invites you to attend a project kickoff meeting to present the purpose of the Frenchtown Traffic Study and identify priority locations and roadways within the Frenchtown neighborhood. The purpose of the study is to provide a comprehensive analysis of the existing conditions within the study area in terms of both vehicular and pedestrian travel conditions. The results of this study will provide guidance for infrastructure improvements which may include intersection improvements, traffic calming, and pedestrian/bicycle safety improvements. The traffic study will follow the guidelines of the Multimodal Transportation District (MMTD) Plan and the three pillars of Frenchtown: Preserve Character, Empower Residents, and Transform Community. The action items listed in the Frenchtown Neighborhood First Plan will be reviewed to ensure the recommendations made as part of this study are consistent with the Neighborhood First Plan.

## TRAFFIC STUDY AREA

The Frenchtown neighborhood is the area that is generally defined by Tennessee Street to the south, Woodward Avenue to the west, 7th Avenue to the north, and Adams Street to the east. This traffic study will focus primarily on the western portion of Frenchtown which is generally defined by Tennessee Street to the south, Woodward Avenue to the west, and Old Bainbridge Road to the north and east.



## MEETING HIGHLIGHTS

**Understand local needs:** Action items from the Frenchtown Neighborhood First Plan will be discussed with the group to confirm issues identified within the plan, as well as identify other potential concerns. Input received at this kickoff meeting will be used to refine the focused study area to ensure the community's highest priority locations are included.



## GET INVOLVED

We invite you to get involved. Send us your comments and ideas regarding the proposed improvements. Should you have questions about this project or meeting, please contact:

### CONTACT INFORMATION:

#### GEORGE SU, P.E. PROGRAM ENGINEER

City of Tallahassee  
Underground Utilities and Public Infrastructure  
george.su@talgov.com  
(850) 891-2858  
300 South Adams Street, Box A-18  
Tallahassee, FL 32301

#### JILLIAN DRISCOLL NEIGHBORHOOD SERVICES COORDINATOR

City of Tallahassee  
jillian.driscoll@talgov.com  
(850) 354-1926  
2295 Pasco Street  
Tallahassee, FL 32310

#### WILLIAM WALDROFF, P.E. PROJECT MANAGER

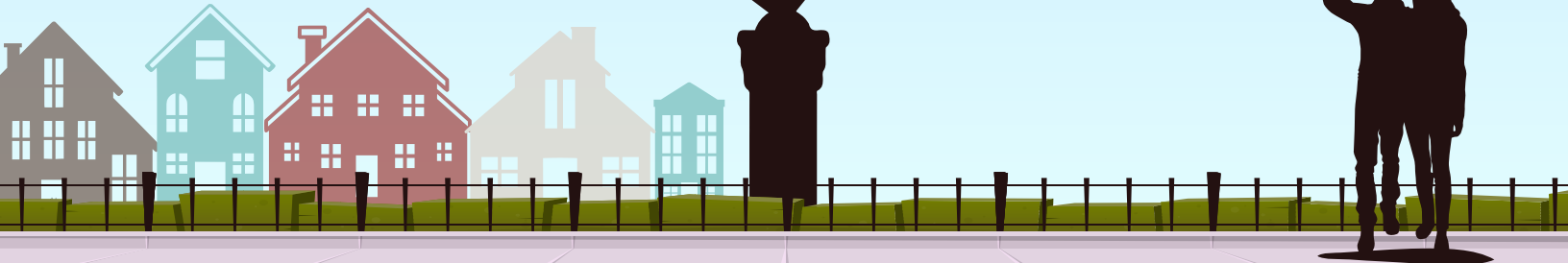
william.waldroff@rsandh.com  
(850) 558-2824  
6265 Old Water Oak Road, Suite 202  
Tallahassee, FL 32312



SCAN ME ↗



Talgov.com/Frenchtown



The City of Tallahassee does not discriminate on the basis of disability in admission to, or operation of its programs, services, activities or facilities. If you require an accommodation because of a disability in order to participate in a meeting, program, event, or activity, please notify Kathleen Wright, Diversity & Inclusion Specialist, Equal Opportunity Coordinator, 300 S Adams Street, Box A-13, Tallahassee, FL 32301, by phone at (850) 891-8266, or via email at [kathleen.wright@talgov.com](mailto:kathleen.wright@talgov.com), or FRS TDD at 711 at least 48 hours [excluding weekends and holidays] prior to the meeting or activity.